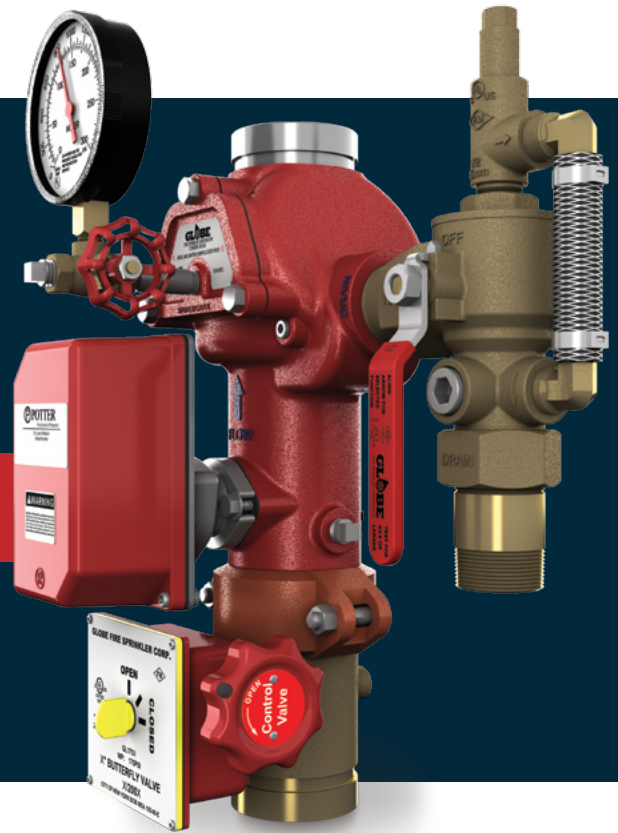


UMC

UNIVERSAL MANIFOLD CHECK

COMPLETE FLOOR CONTROL ASSEMBLY:

CONTROL VALVE | FLOW SWITCH | TEST & DRAIN
RELIEF VALVE | REQUIRED SYSTEM GAUGE



The revolutionary design of the Globe UMC Universal Manifold Check integrates all the necessary components for a floor control or shotgun riser into a single assembly. This results in the industry's most compact footprint — and eliminates the need to order separate Riser Manifolds, Control Valves, Check Valves and Relief Valve Kits, decreasing installation time.

The UMC is UL Listed and FM Approved in multiple configurations, and is rated for pressures up to 300 psi. The multiple configurations, pressure rating, and small envelope allows the UMC to overcome site specific installation challenges in the field.

SAVE SPACE. SAVE TIME. SAVE MONEY.

- Straight out of the box, the unit integrates all necessary pre-mounted components: control valve, check valve, flow switch, test and drain, pressure relief kit and gauges.
- Compact design saves valuable space in tight-quarter installations such as halls, stairwell landings and alcoves.
- Available in both left- and right-handed orientations for horizontally-mounted applications.
- Available in a variety of sizes to meet nearly any application.

FLOOR CONTROL ASSEMBLY

The Globe UMC can be used to meet NFPA 13 requirements for Floor Control Valve Assemblies in buildings exceeding two stories that are zoned by floor — or in any application that specifies separate control and floor zoning.

The UMC is engineered with space savings in mind for those commonly installed applications in stairwell landings and small alcoves. All UMC assemblies include the NFPA 13 required Listed pressure relief valve, test and drain valve and pressure gauge.



SHOTGUN RISER ASSEMBLY

Shotgun riser assemblies are typically installed in vertical orientations on individual system risers. The Globe “Shotgun” Riser Manifold Assembly is available in 4" and 6" sizes and is equipped with:

- Control valve
- Check valve
- Flow switch
- Test and drain valve with NFPA required pressure relief valve
- System and supply gauges

The 4" and 6" assemblies are equipped with a pressure gauge on both system side and supply side of the check valve clapper.



TECHNICAL SPECIFICATIONS

Approvals:

- cULus and FM

Maximum system working pressure:

300 psi (20.6 bar)

JOIN THE REVOLUTION!

By combining all the necessary components of a floor control assembly into one unit, the Globe UMC revolutionizes system installation. It saves installation time — and, as we all know, time is money.

To learn more about the Globe UMC assembly, contact your local Globe territory manager, contact our customer service team at **(989) 846-4583** or visit globesprinkler.com/UMC.



Technical Support
989-414-2600
techservice@globesprinkler.com

Customer Service
989-846-4583
domesticsales@globesprinkler.com
internationalsales@globesprinkler.com

globesprinkler.com